

NORTHERN REGIONAL ROAD SAFETY COMMISSION



Mr. Sumani Mohammed Mbo
Road Safety Coordinator (Northern Region)
P.O. Box 2573
Tamale
Tel : 233-21-23724
Fax : 071-23154
Mobile : 00233-24-3529741
E – mail : @nrsc.gov.gh

Brief about Regional Coordinator

MR. Sumani Mohammed Mbo the Northern Regional Co-ordinator of the National Road Safety Commission is.

Brief about Northern Region

The region is situated in the norther part of the republic of Ghana. The Northern Region, which occupies an area of about 70,383 square kilometres, is the largest region in Ghana in terms of land area. It shares boundaries with the Upper East and the Upper West Regions to the north, the Brong Ahafo and the Volta Regions to the south, and two neighbouring countries, the Republic of Togo to the east, and La Cote d' Ivoire to the west

The Northern Region is the largest area of Ghana. It is divided into 18 districts. The regional capital is Tamale.

Topography

The land is mostly low lying except in the north-eastern corner with the Gambaga escarpment and along the western corridor. The region is drained by the Black and white Volta and their tributaries, Rivers Nasia, Daka, etc.

Culture

The major ethnic groups of the region are the Mole Dagbon, (52.2%) the Gurma, (21.8%) the Akan and the Guan (8.7%). Among the Mole-Dagbon, the largest subgroup are the Dagomba and the Mamprusi, while the Komkomba are the largest of the Gurma, the Chokosi of the Akan and the Gonja of the Guan. The Dagomba constitute about a third of the population of the region

The indigenous languages spoken by the people vary from district to district. The Gonja language is spoken mostly in three districts, namely East Gonja, West Gonja and Bole. Dagbani, the language of the Dagomba, is spoken in nine of the thirteen districts. The Kokomba language is spoken mainly in some parts of Saboba-Chereponi, Zabzugu Tatale, East Gonja and Nanumba, Districts. More than half of the population of the region (56.2%) are Muslims. The rest are largely adherents of Traditional religion (21.3%), Christians (19.3%) and other religious groups (3.3%).

Road Traffic Crash Situation in the Region

ACCIDENT CHARACTERISTICS - NORTHERN REGION PART 1

Figure 1: Distribution of Fatal Accidents and Fatalities by Region (2001-2005)

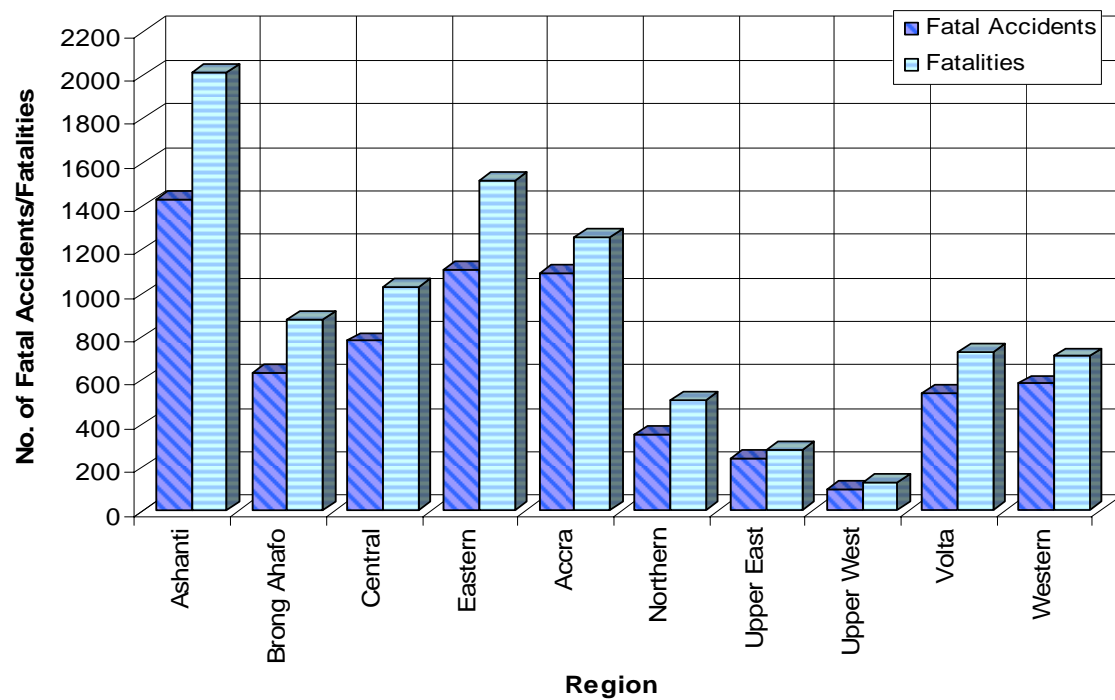


Figure 2: Proportion of Fatalities by Road User Class for Ashanti Compared to National

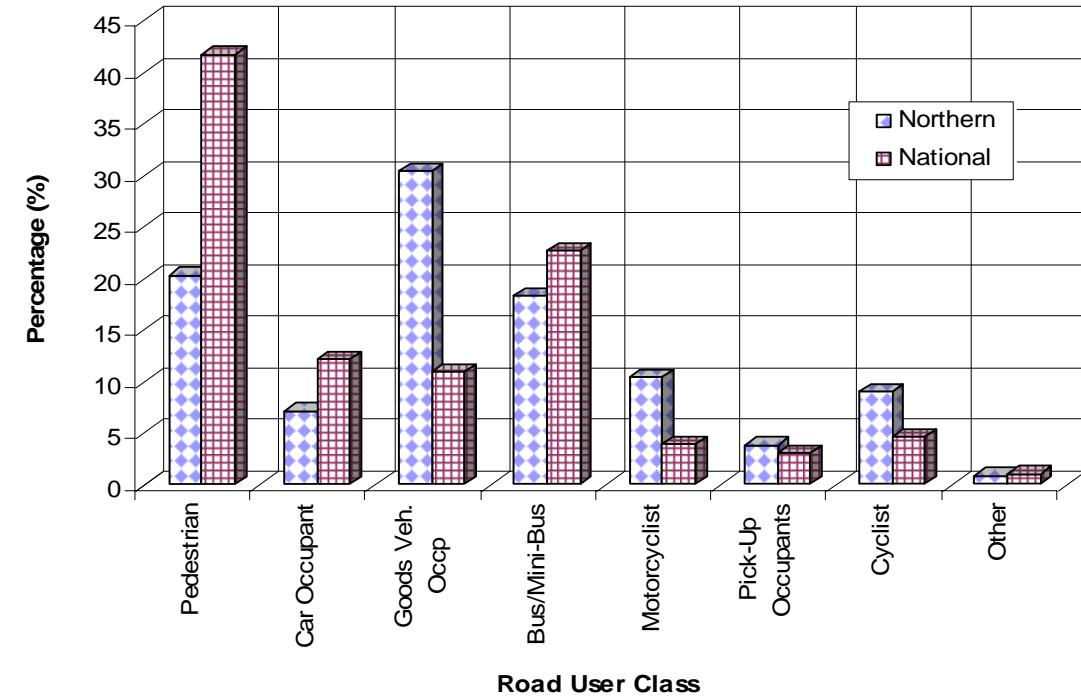


Figure 3: Proportion of Fatalities by Collision Type

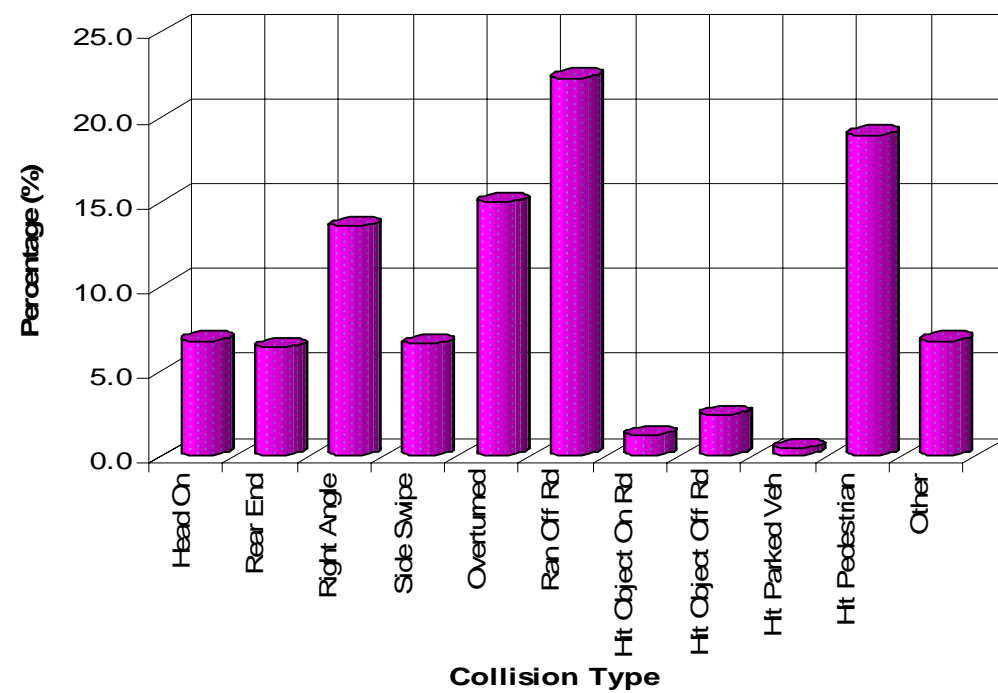


Figure 4: Annual Distribution of Fatal Accidents and Fatalities



ACCIDENT CHARACTERISTICS - NORTHERN REGION PART 2

Figure 5: Annual Changes in Fatalities by Road User Class

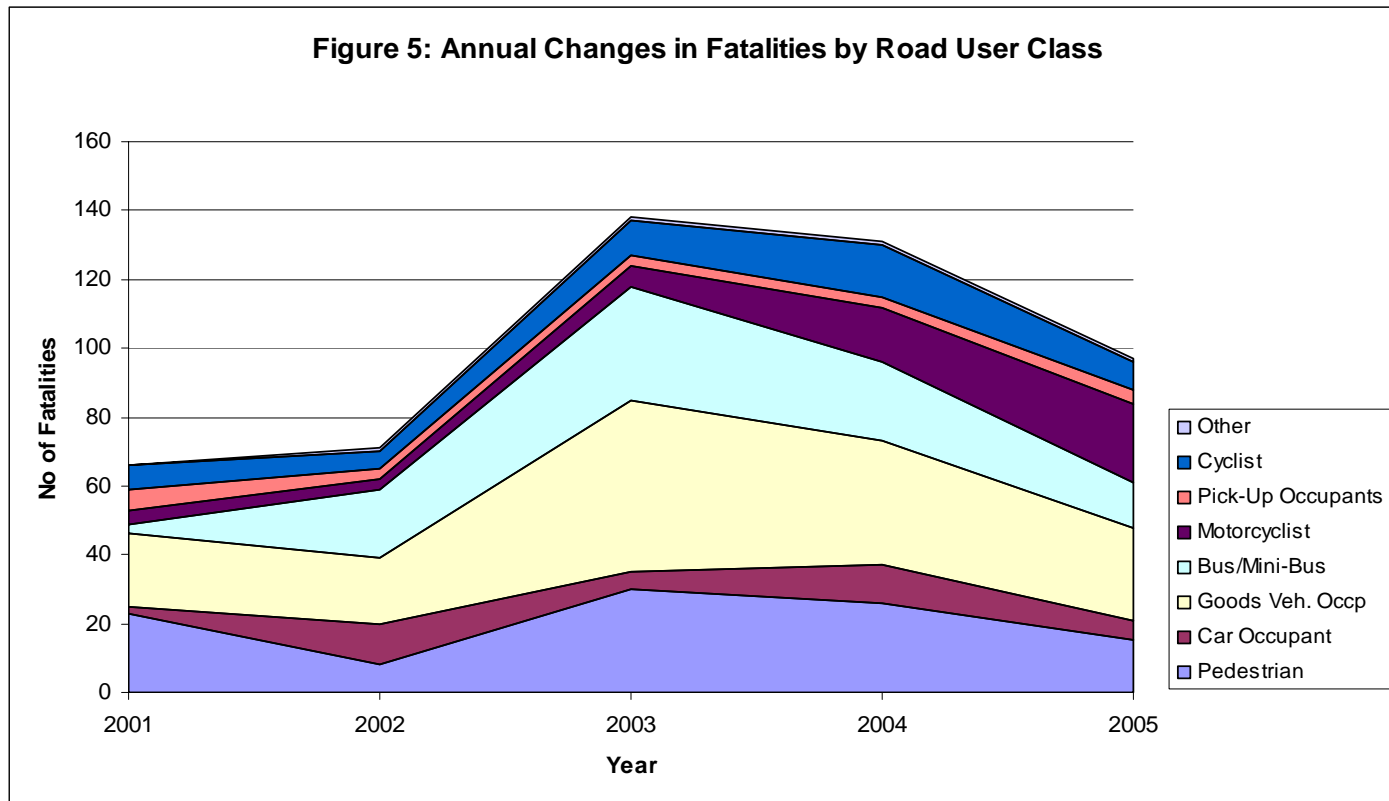


Figure 6: Distribution of Fatalities by Road Environment

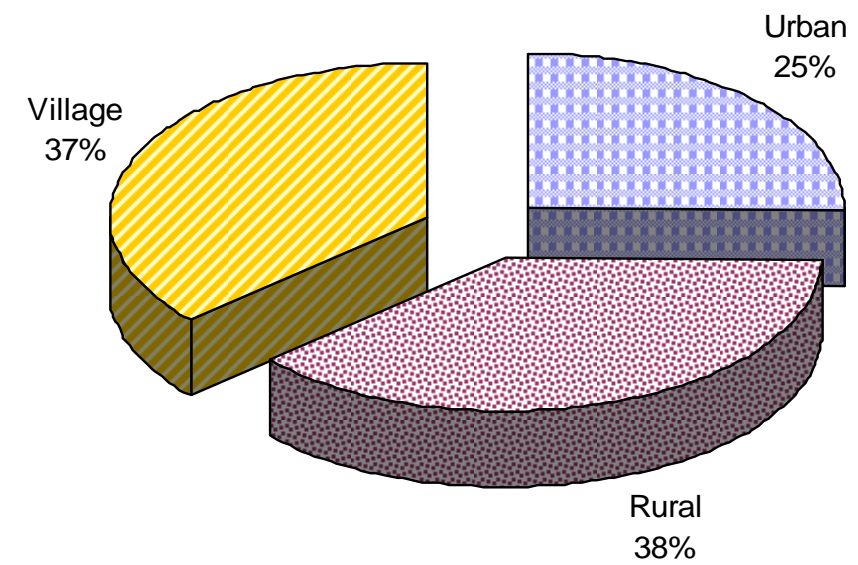


Figure 7: Trend in Fatalities by Road Environment

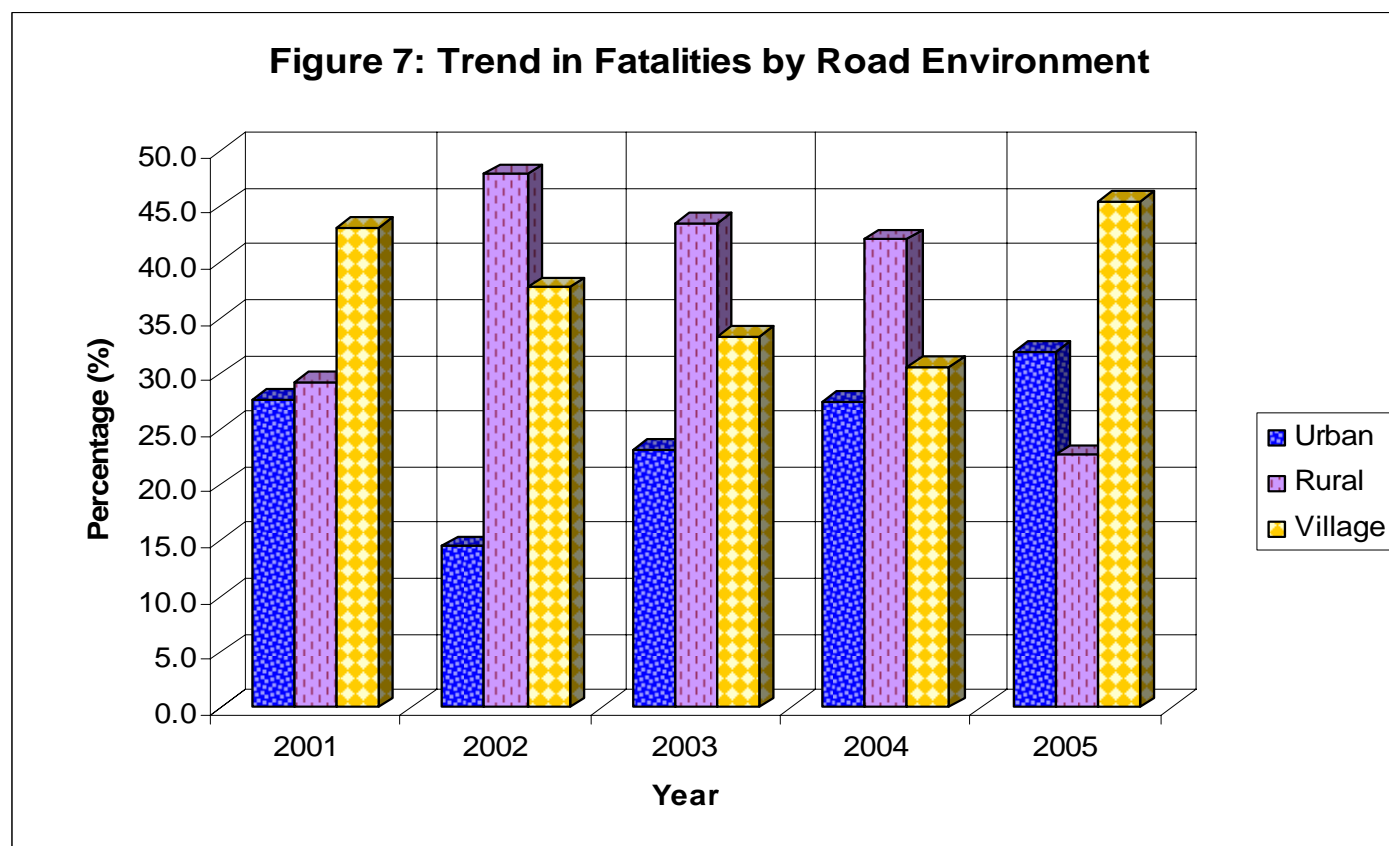
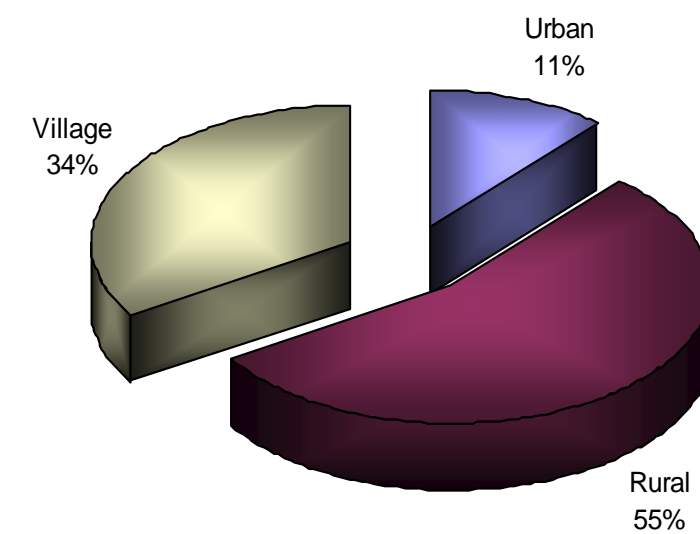


Figure 8: Distribution of Goods Vehicle Fatalities by Road Environment



ACCIDENT CHARACTERISTICS - NORTHERN REGION PART 3

Figure 9: Distribution of Motor-cycle & Cycle Fatalities by Road Environment

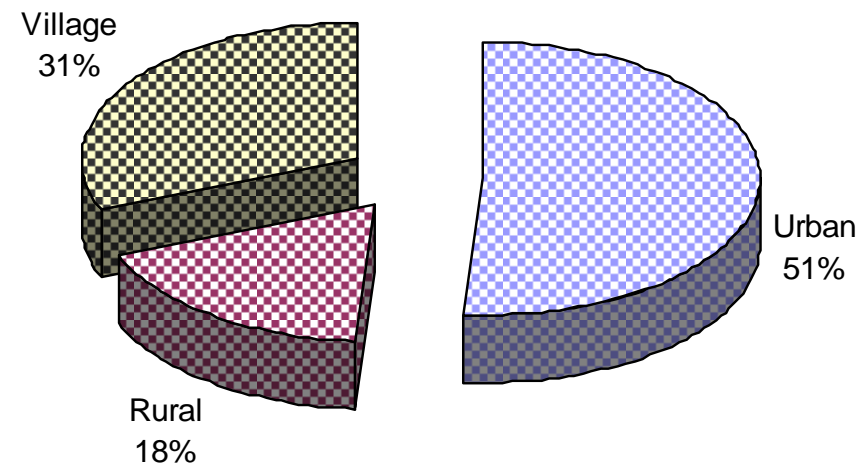


Figure 10: Distribution of Fatalities by Month

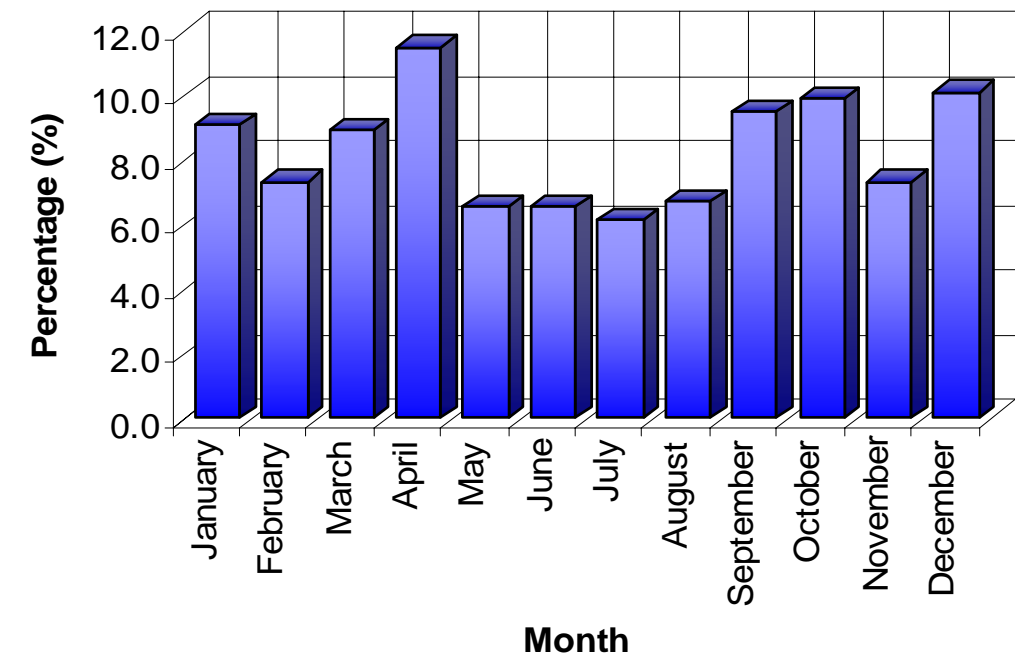


Figure 11: Distribution of Fatalities by Day of Week

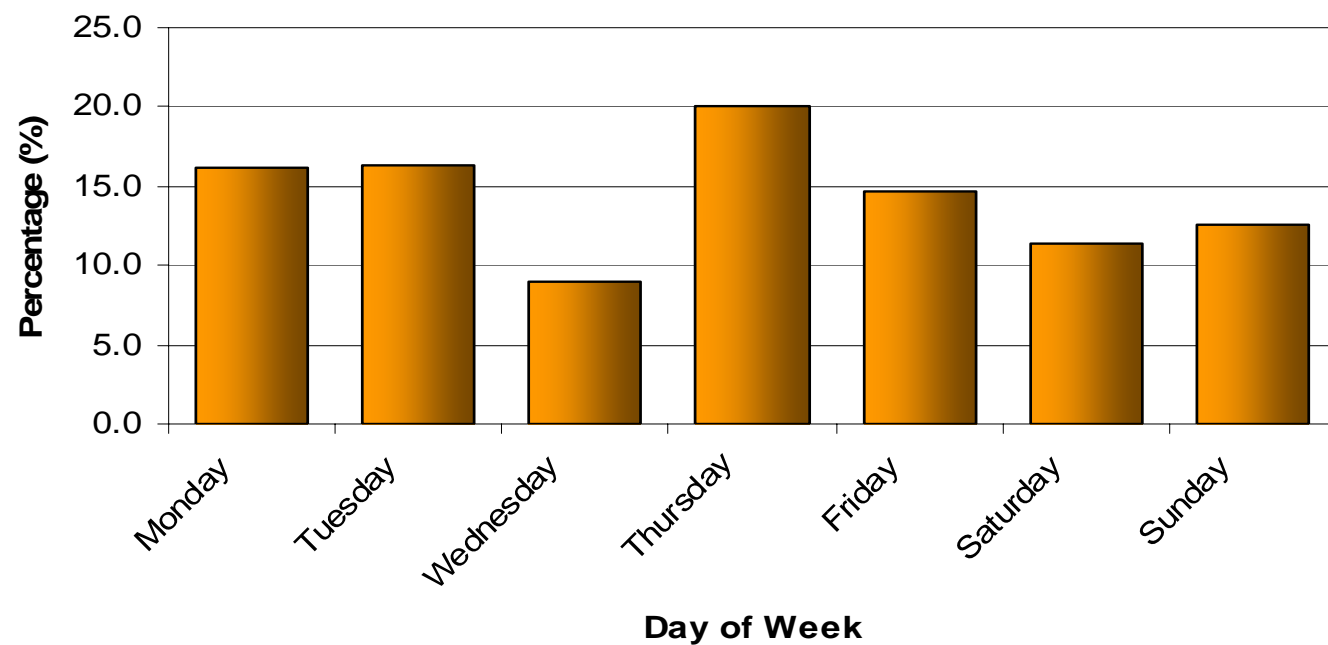


Figure 12: Distribution of Fatalities by Road User Class

