

## CENTRAL REGIONAL ROAD SAFETY COMMISSION



**Miss. Catherine Hamilton**  
**Road Safety Coordinator (Central Region)**  
**P.O. Box 124**  
**Cape Coast**

**Tel : 061 - 28840**  
**Fax : 061 - 28848**  
**Mobile : 00233-244-381701**  
**E – mail : wuakud@yahoo.com**  
**: catherine.hamilton@nrsc.gov.gh**

### Brief about Regional Coordinator

Catherine Hamilton is a graduate of the University of Ghana, Legon and has a Bachelor of Arts degree in Psychology.

Prior to joining NRSC, Catherine worked in areas of customer service, Human Resource Training and manpower development in both the United Kingdom and Ghana.

Catherine's experience cuts across all key areas of administration with strong emphasis on training.

She has always been involved in enterprises at emerging or turnaround stages and played key roles in areas of innovation, creating and implementation of strategy, process re-engineering, leadership, human resources and entrepreneurial marketing.

### Brief about Central Region

The **Central Region** is one of Ghana's ten administrative regions. It is bordered by the Ashanti and Eastern regions to the north, Western region to the west, Greater Accra region to the east, and to the south by the Atlantic Ocean. With a land area of 9826km<sup>2</sup> and population of 1,593,823 (Census, 2000) the region is further distributed per the following districts Abura/Asebu/Kwamankese District, Agona District, Ajumako/Enyan/Essiam District, Asikuma/Odoben/Brakwa District, Assin North District, Assin South District, Awutu/Effutu/Senya District, Cape Coast Municipal District, Gomoa District, Komenda/Edina/Eguafo/Abirem District, Mfantsiman District, Twifo/Heman/Lower Denkyira District, Upper Denkyira District

### Road Traffic Crash Situation in the Region

The Road Safety Problem in the Region:

#### Drivers:

Fatigue, Inexperience, Over Speeding and Overloading. Overtaking on hillcrest, Pedestrian casualties, Driving under the influence of alcohol

#### Pedestrians:

Not crossing at designated marked places, Thoughtfulness, Inconspicuous clothing, Distraction to drivers, Drunkenness.

#### Passengers:

Ignorance

#### Vehicles:

Some vehicles are not road worthy, Worn out tyres, Broken down vehicles with no warning signs  
Overloading of passengers and goods

#### Road:

Potholes

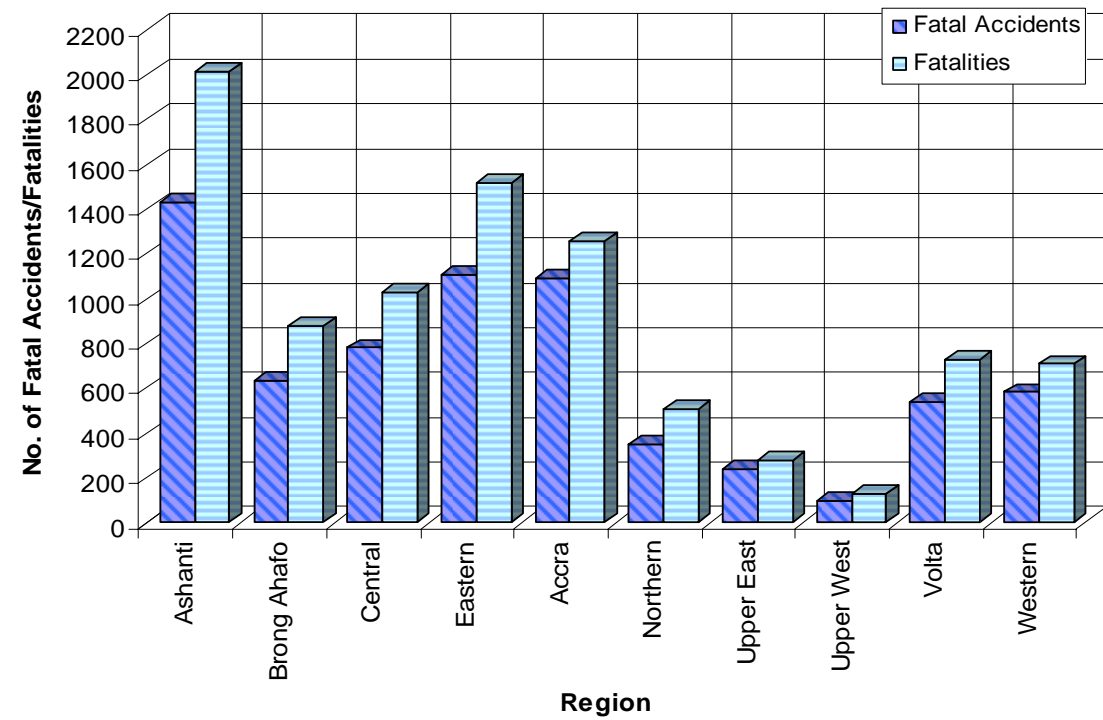
Weedy shoulders

Inadequate signs and markings

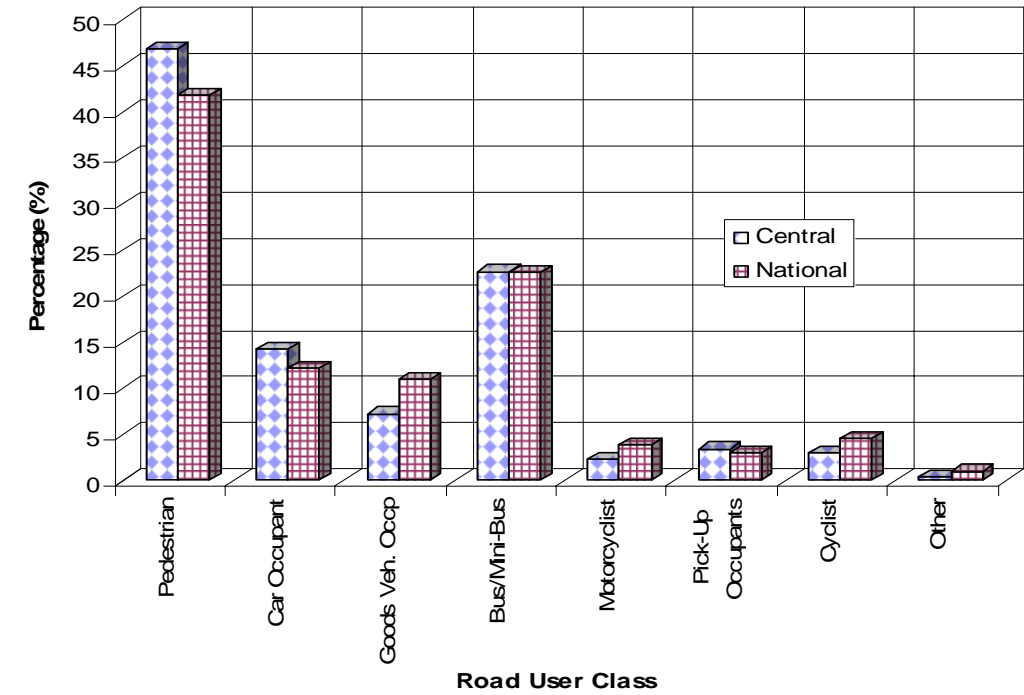
Discrepancy between designed speed and desired speed

## ACCIDENT CHARACTERISTICS - CENTRAL REGION PART 1

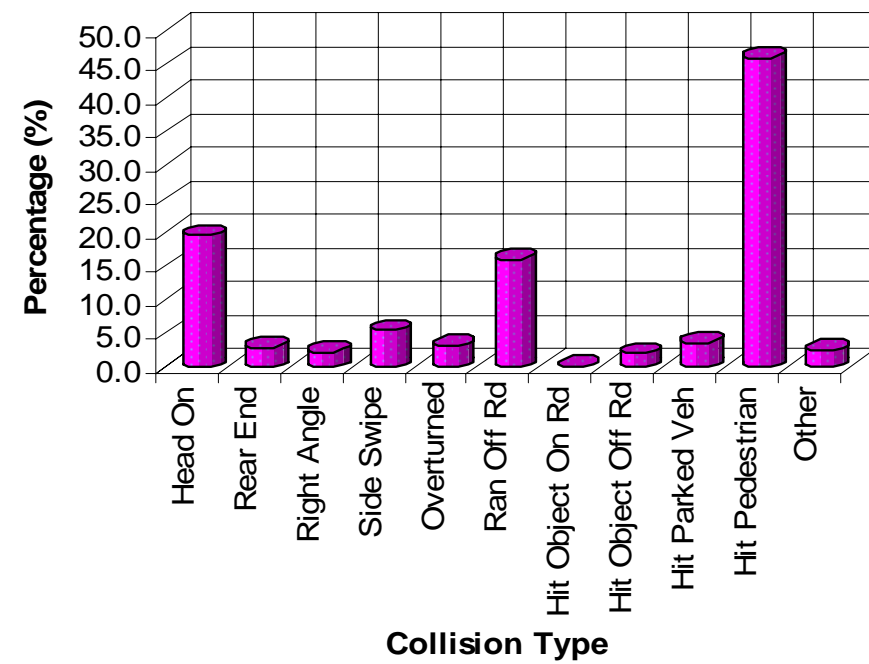
**Figure 1: Distribution of Fatal Accidents and Fatalities by Region (2001-2005)**



**Figure 2: Proportion of Fatalities by Road User Class for Central Compared to National**



**Figure 3: Proportion of Fatalities by Collision Type**



**Figure 4: Annual Distribution of Fatal Accidents and Fatalities**



## ACCIDENT CHARACTERISTICS – CENTRAL REGION *PART 2*

Figure 5: Annual Changes in Fatalities by Road User Class

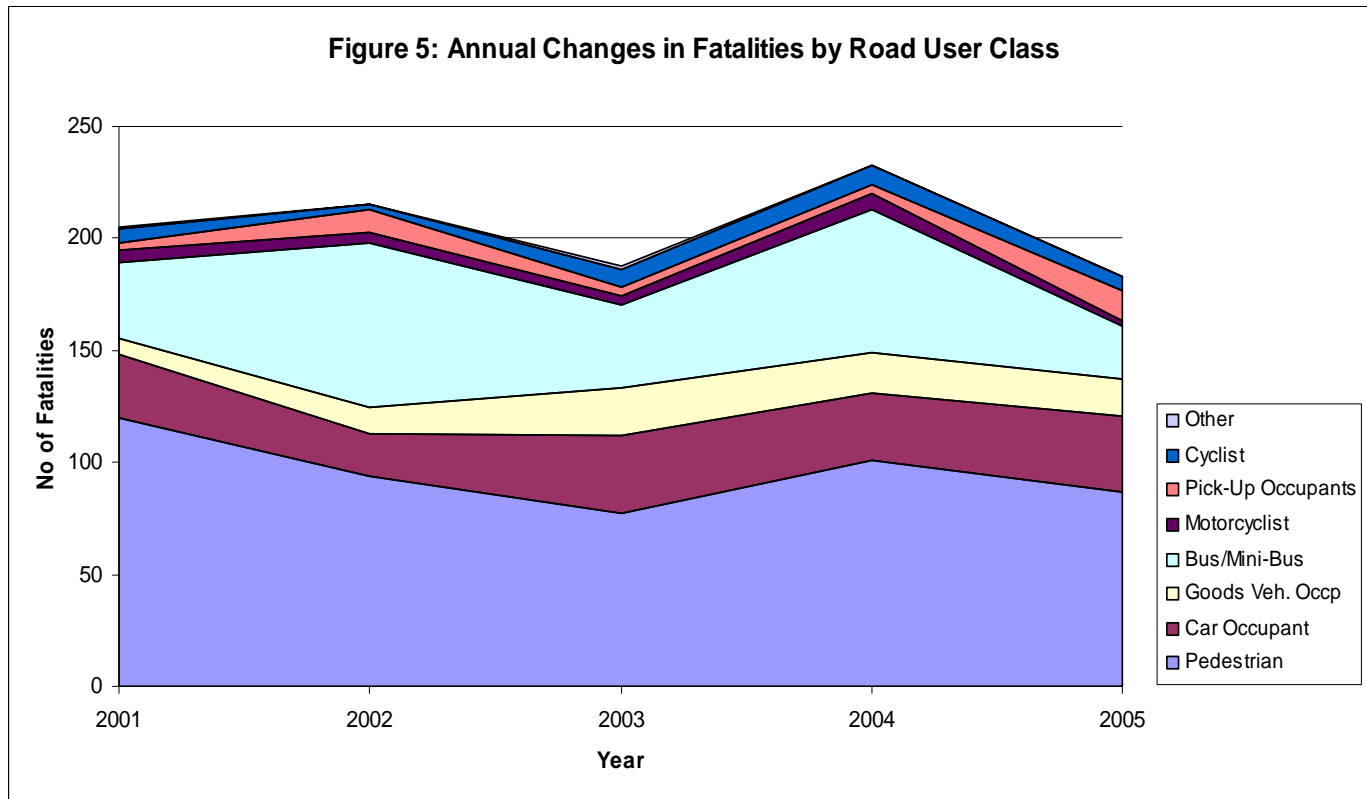


Figure 6: Proportion of Fatalities by Road Environment

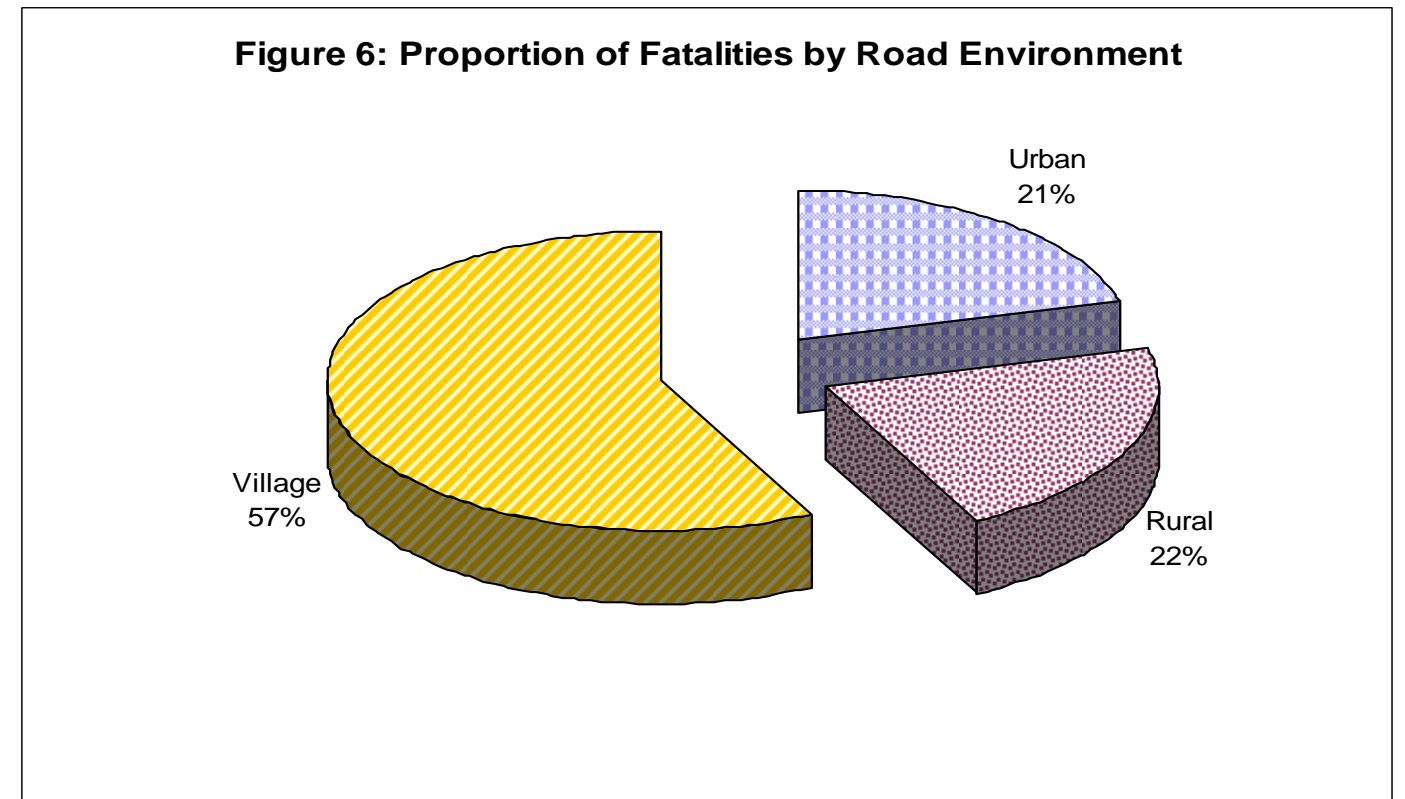


Figure 7: Trend in Fatalities by Road Environment

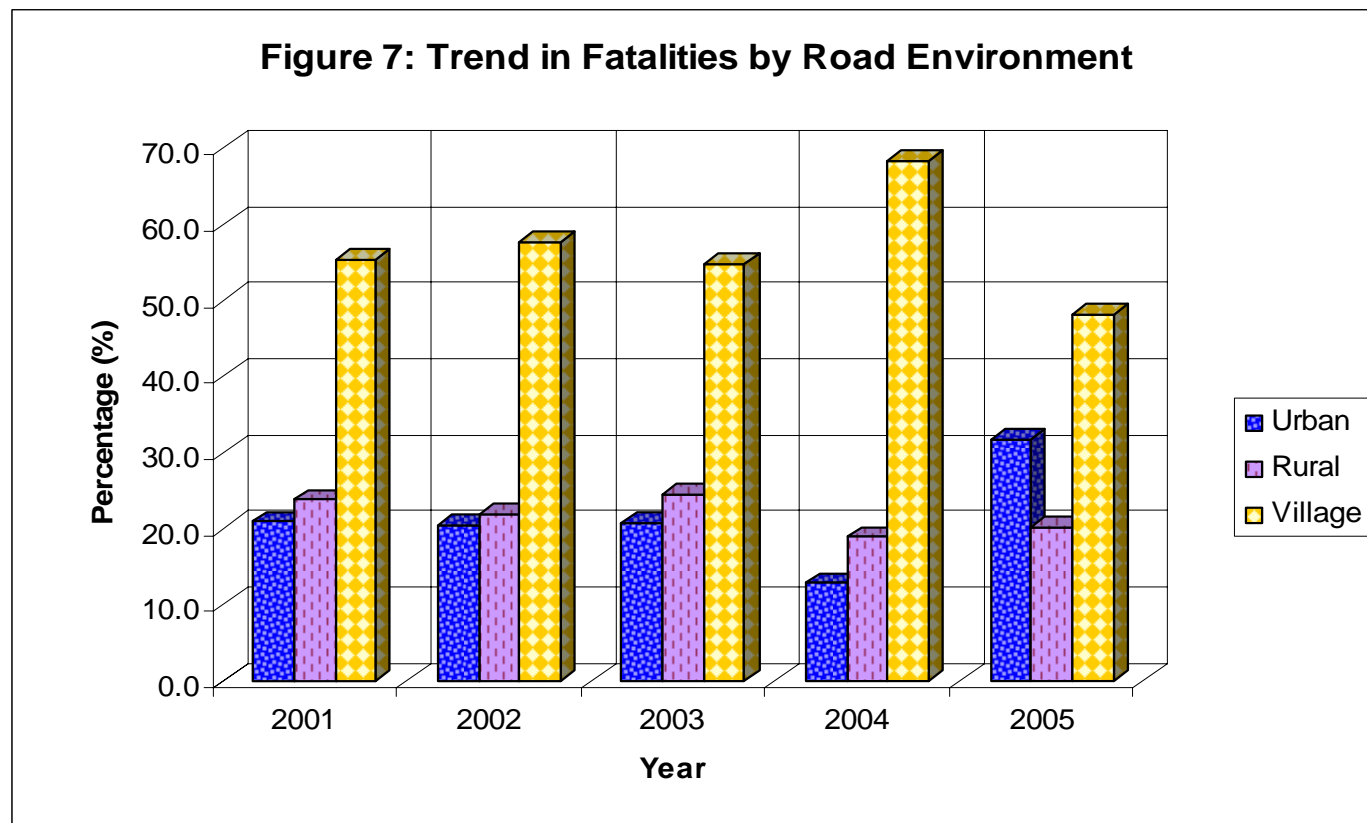
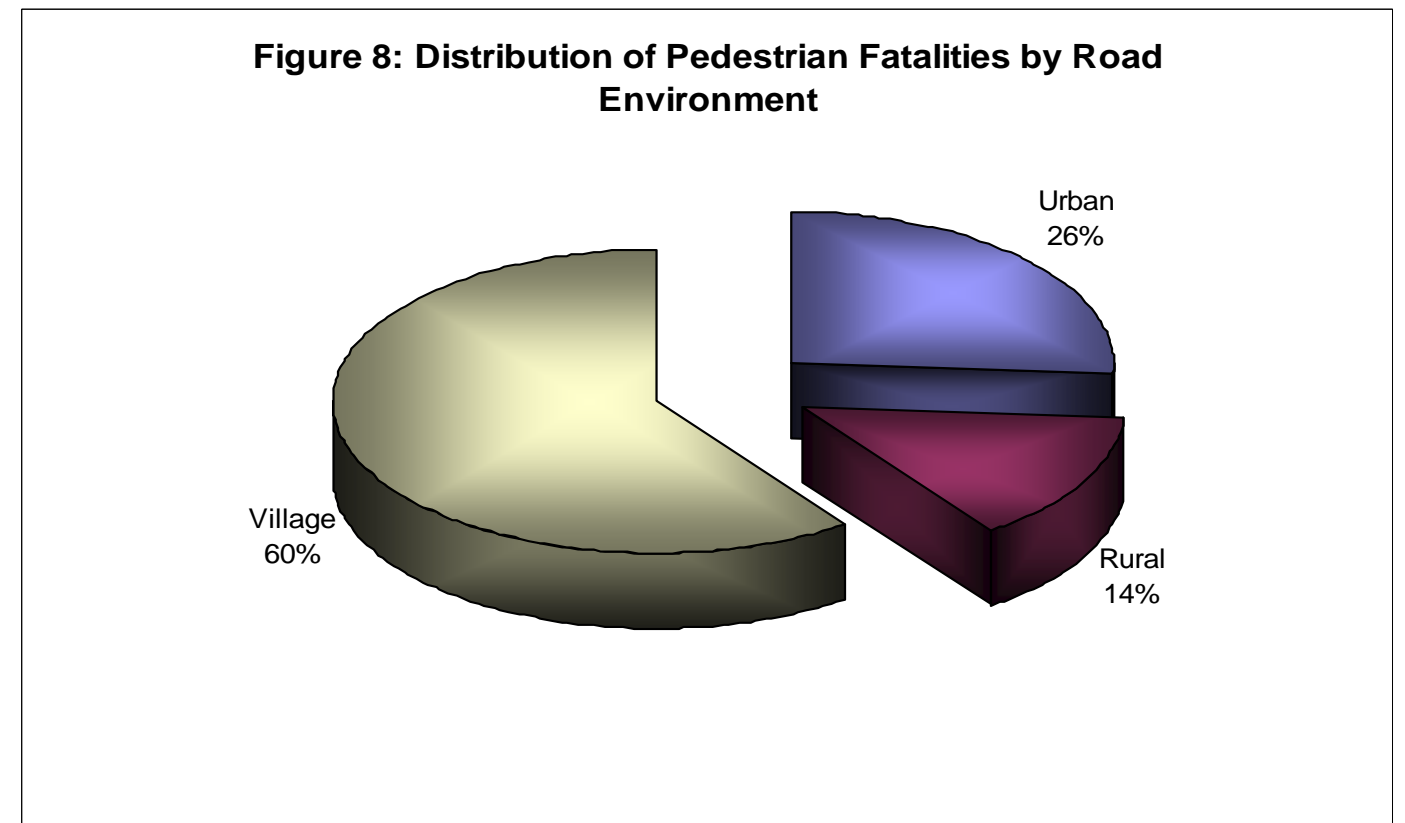
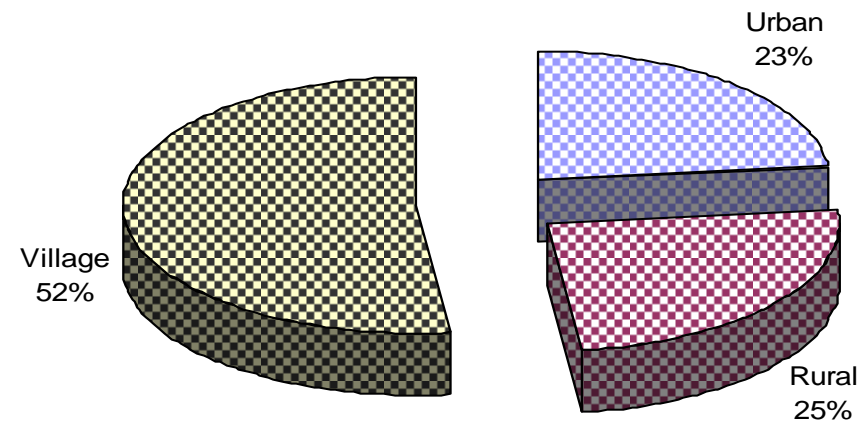


Figure 8: Distribution of Pedestrian Fatalities by Road Environment

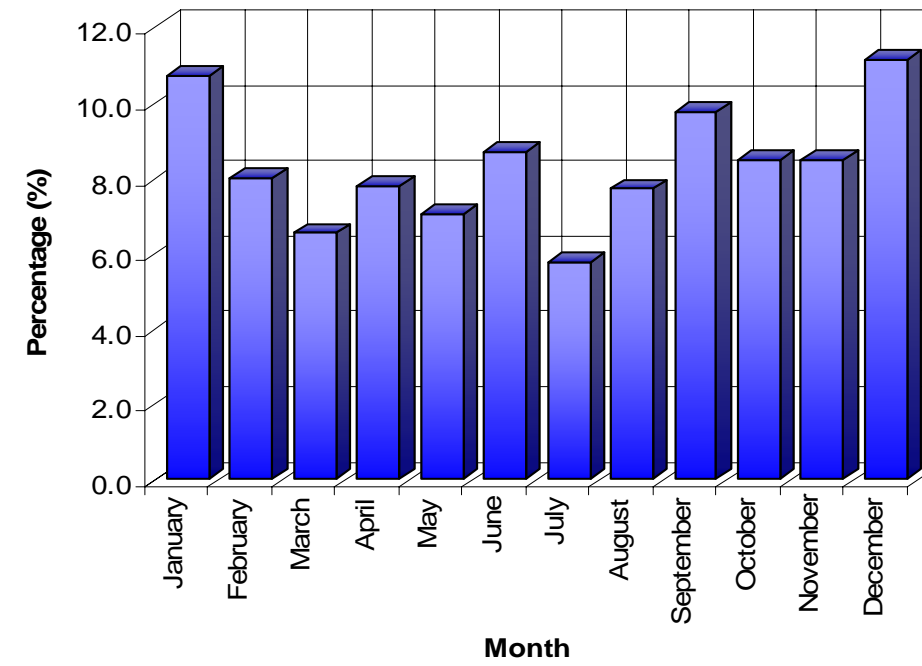


## ACCIDENT CHARACTERISTICS - CENTRAL REGION PART 3

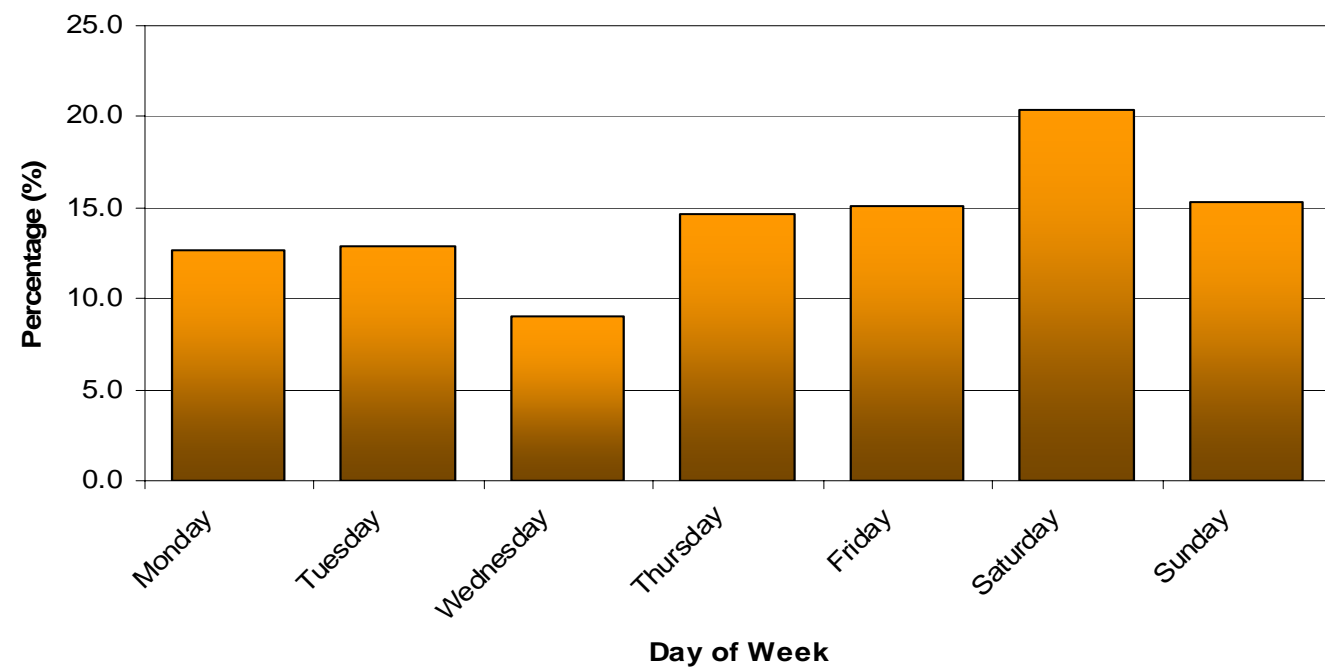
**Figure 9: Distribution of Car Fatalities by Road Environment**



**Figure 10: Distribution of Fatalities by Month**



**Figure 11: Distribution of Fatalities by Day of Week**



**Figure 12: Distribution of Fatalities by Hour of Day**

