

## WESTERN REGIONAL ROAD SAFETY COMMISSION



**Mr. Albert Thomas Bismark Boakye**  
**Road Safety Coordinator (Western Region)**  
**P.O. Box AX 949**  
**Takoradi.**

**Tel : 233-**  
**Fax : 031**  
**Mobile : 0208366312**  
**E – mail : @nrsc.gov.gh**

### Brief about Regional Coordinator

Albert Thomas Bismark Boakye is a product of Ghana Institute of Journalism, The Staff College, Institute of Fire Engineers UK, Fire Service College UK and University of Ghana, Legon. Before his appointment in 2003 as the Regional Coordinator, he was the District Fire Officer for Ghana National Fire Service, Prestea Fire Station.

### Brief about Western Region

#### GUIDE TO WESTERN REGION



On the southwestern shores of Ghana, nestled between the Gulf of Guinea and the (la Cote D' Ivoire), is the Western Region and its twin-city capital, Sekondi-Ta - koradi. The nucleus of this thriving metropolis is a modern harbour from which Ghana's principal exports of cocoa, coffee, bauxite, manganese and timber are shipped to markets. From the sandy shores of Shama through the thick verdant forest regions to the border with La Cote d' Ivoire lies this region with Seventeen districts.

It has a good road network. Interestingly, Mpohor Wassa East district is the only district in Ghana that has not recorded any fatal road accident for the past six (6) years. There are also beautiful beaches, historic forts, popular cultural events, a village on stilts and some charmed crocodiles which will keep adventure loving travellers busy. The population of this region is approximately 1,900,000 people.

The Western Region covers an area of approximately 21,391 square kilometres, which is about 10 per cent of Ghana's total land area. The region has about 75 per cent of its vegetation within the high forest zone of Ghana, and lies in the equatorial climatic zone that is characterized by moderate temperatures.

It is also the wettest part of Ghana with an average rainfall of 1,600mm per annum. It is bordered on the east by the Central Region, to the west by the Ivory Coast (Cote D'Ivoire), to the north by Ashanti and Brong-Ahafo Regions, and to the south by the Gulf of Guinea. The southernmost part of Ghana lies in the region, at Cape Three Points near Busua, in the Ahanta West District.

The Western Region lies in the equatorial climatic zone that is characterised by moderate temperatures, ranging from 22°C at nightfall to 34°C during the day. The Region is the wettest part of Ghana, with a double maxima rainfall pattern averaging 1,600 mm per annum. The two rainfall peaks fall between May-July and September/October. In addition to the two major rainy seasons, the region also experiences intermittent minor rains all the year round. This high rainfall regime creates much moisture culminating in high relative humidity, ranging from 70 to 90 per cent in most parts of the region.

### Culture

The people of the Region made up of five distinct traditions of Ahanta, Aowin, Nzema, Sefwi and Wassa each with its own district unadulterated traditions steeped in its own rich culture which is brought to bear on their annual festivals of Kuundum, Afahye, Odwira and Elluelie between the months of June and October each year.

You can't resist the colorful masqueraders, exciting acrobats and irresistible brass band music that have become part of these festivals.

Meeting and knowing the people would be a worthy experience, but it wouldn't be complete without a visit to NZULESO – as town built on Lagoon Amunsure.

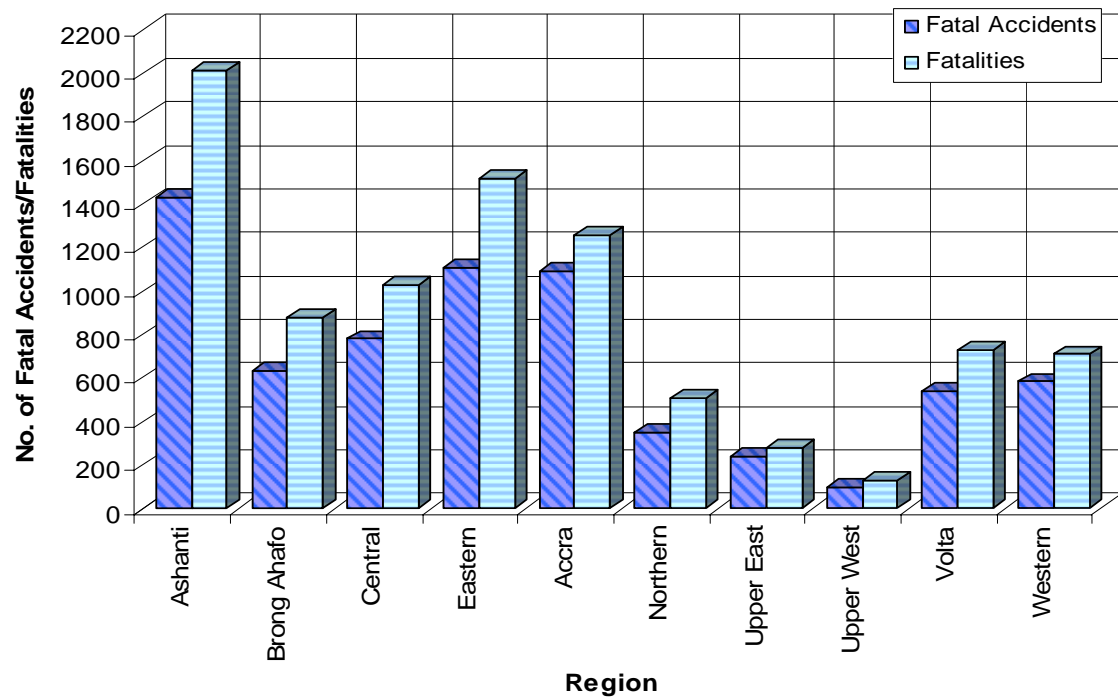
The people of Nzuleso are river dwellers who live their full life on the Lagoon. A visit there would be worth the experience.

### Road Traffic Crash Situation in the Region

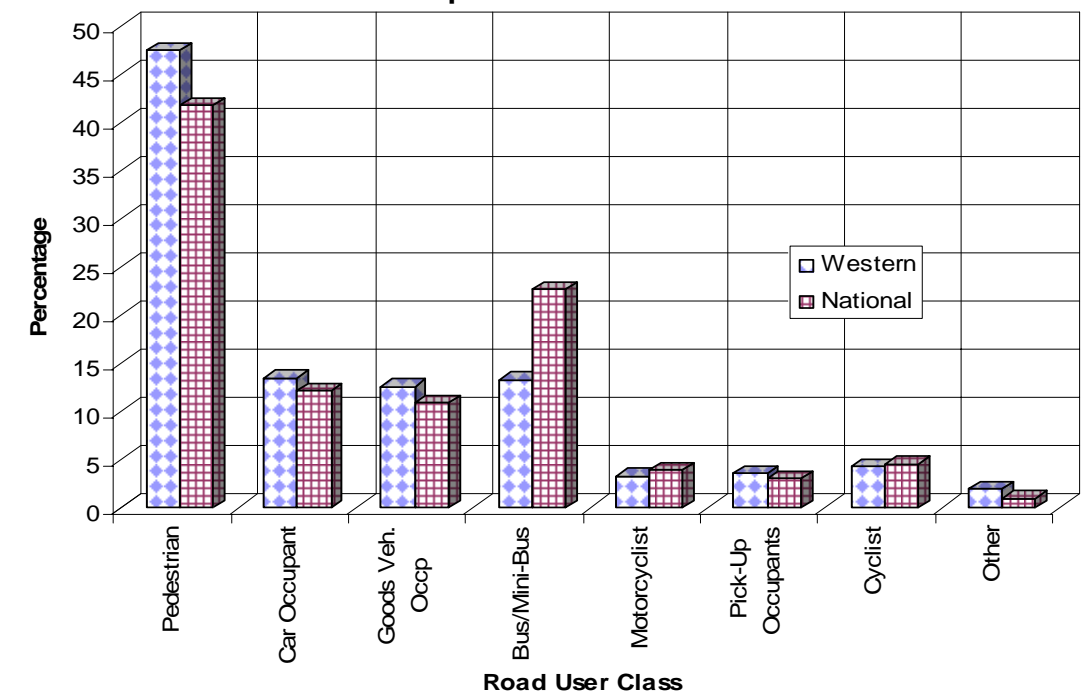
On the coastal strip of the region is the Trans-West African Highway This runs the length of the coastal fringes all the way to the border with La Cote d'Ivoire.

## ACCIDENT CHARACTERISTICS - WESTERN REGION PART 1

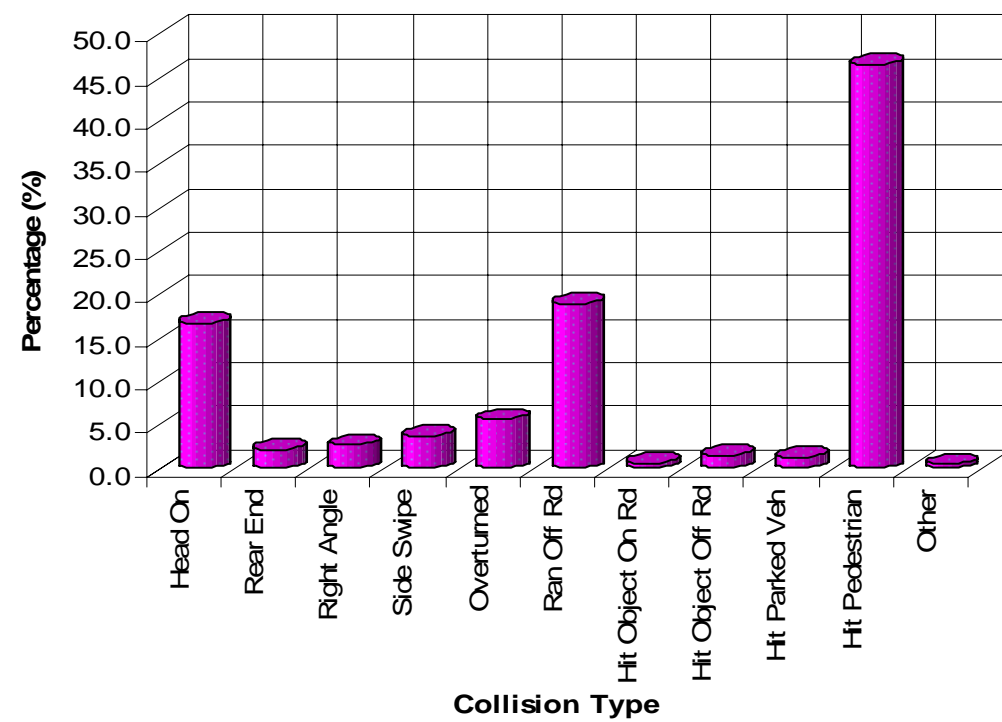
**Figure 1: Distribution of Fatal Accidents and Fatalities by Region (2001-2005)**



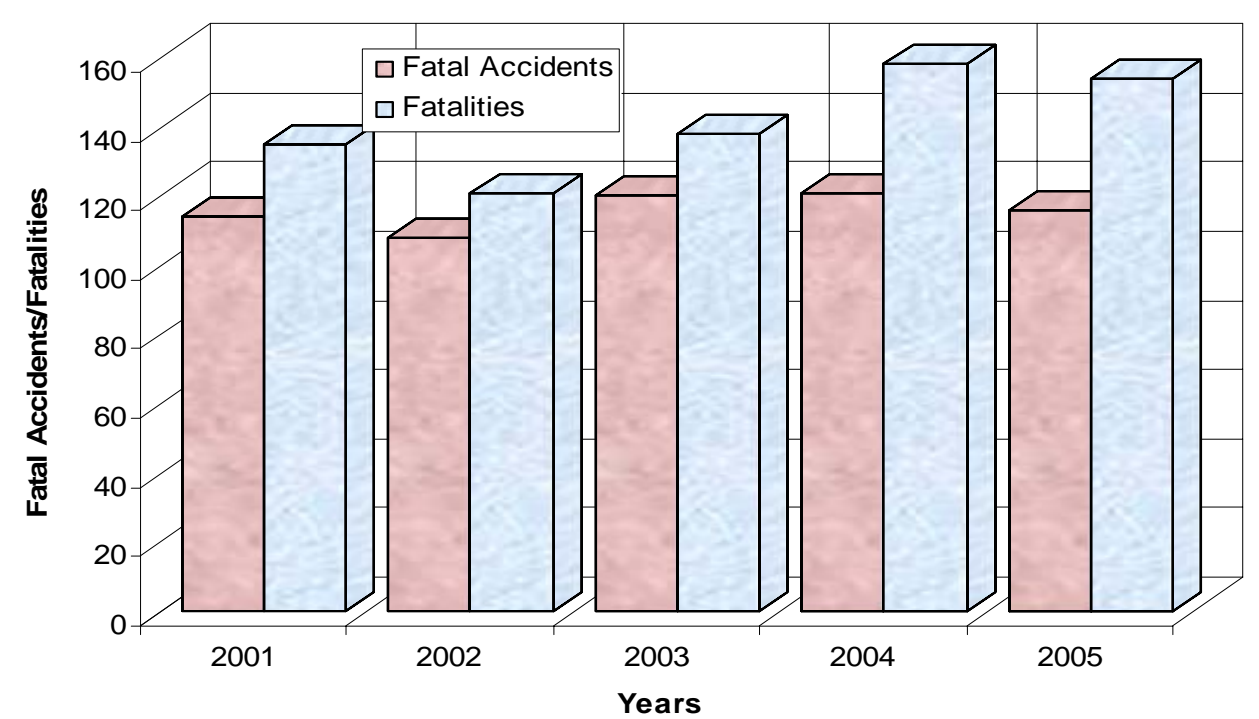
**Figure 2: Proportion of Fatalities by Road User Class for Western Compared to National**



**Figure 3: Proportion of Fatalities by Collision Type**

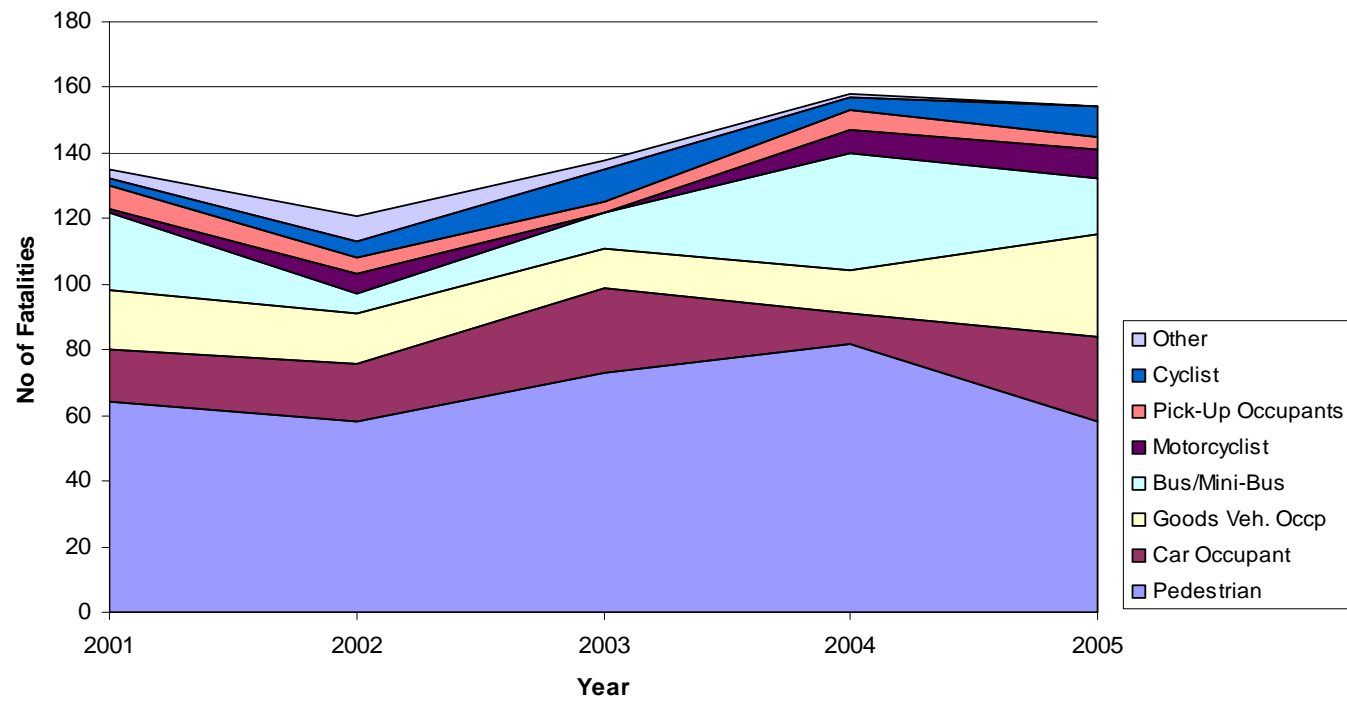


**Figure 4: Annual Distribution of Fatal Accidents and Fatalities**

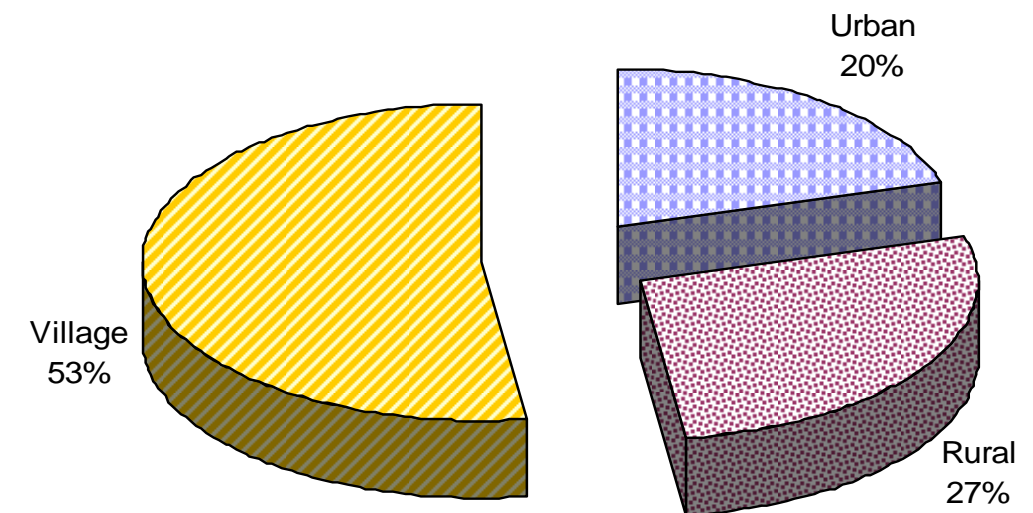


## ACCIDENT CHARACTERISTICS – WESTERN REGION PART 2

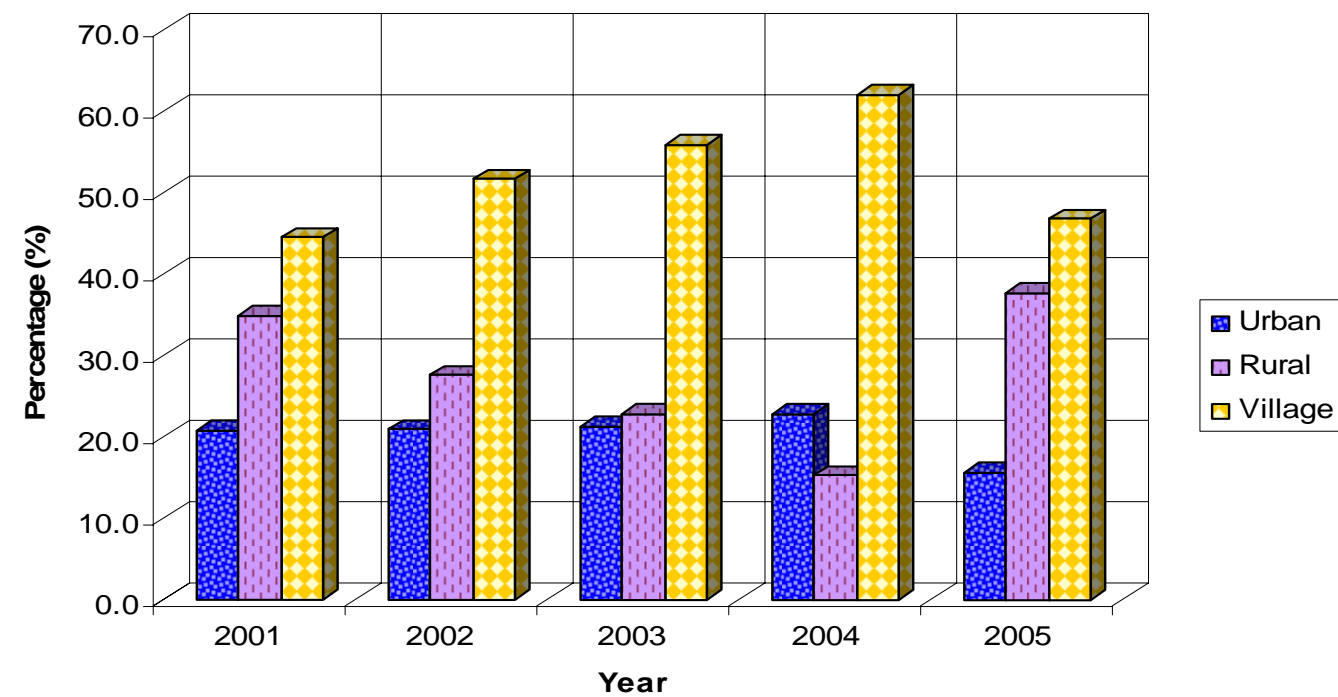
**Figure 5: Annual Changes in Fatalities by Road User Class**



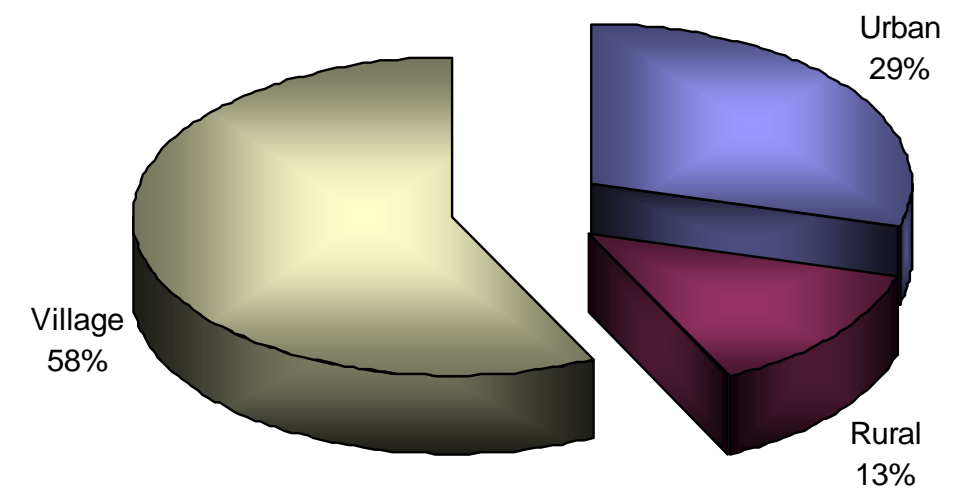
**Figure 6: Proportion of Fatalities by Road Environment**



**Figure 7: Trend in Fatalities by Road Environment**

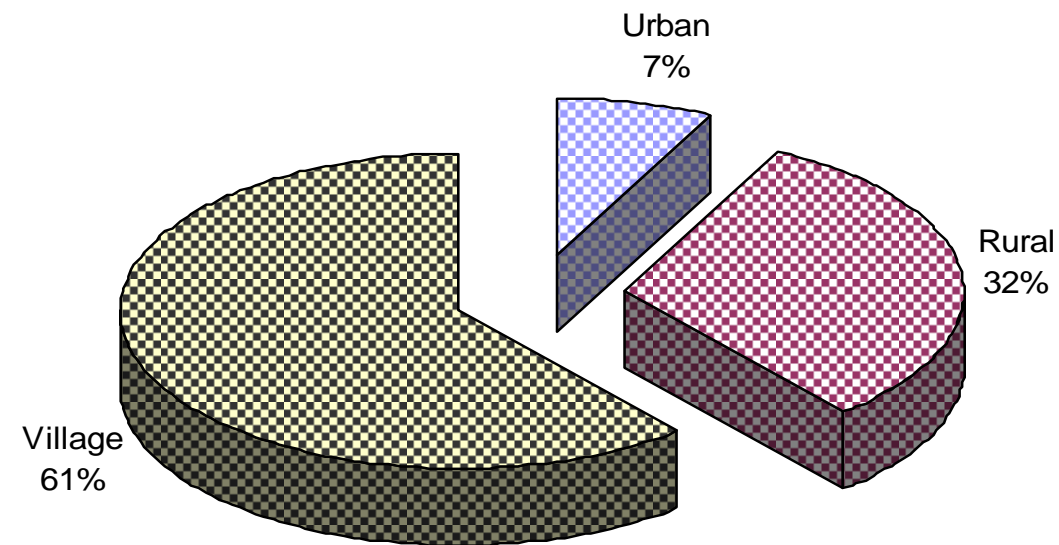


**Figure 8: Distribution of Pedestrian Fatalities by Road Environment**

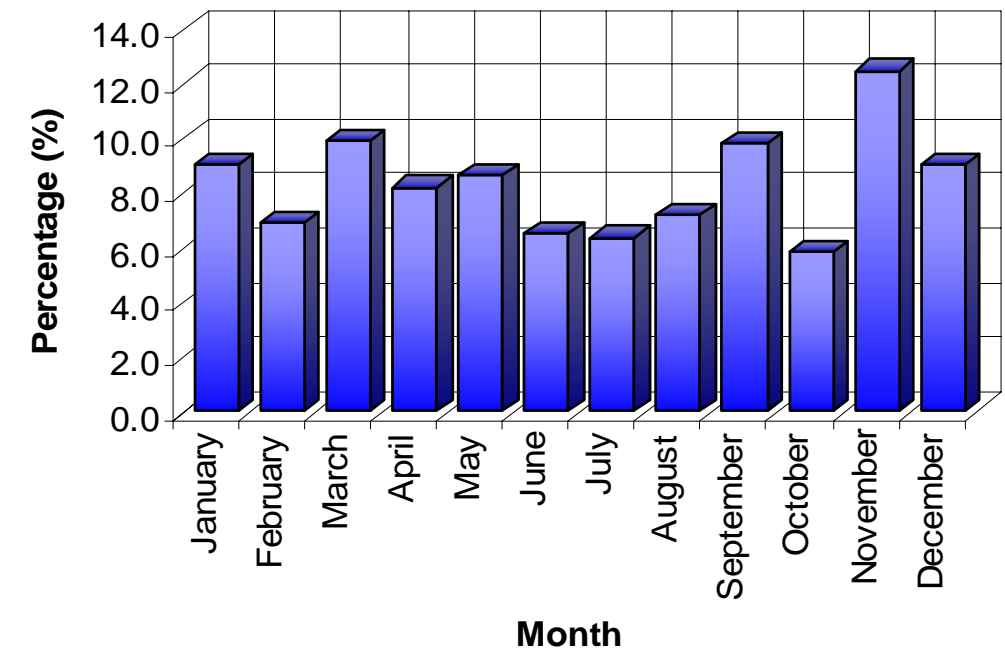


## ACCIDENT CHARACTERISTICS - WESTERN REGION PART 3

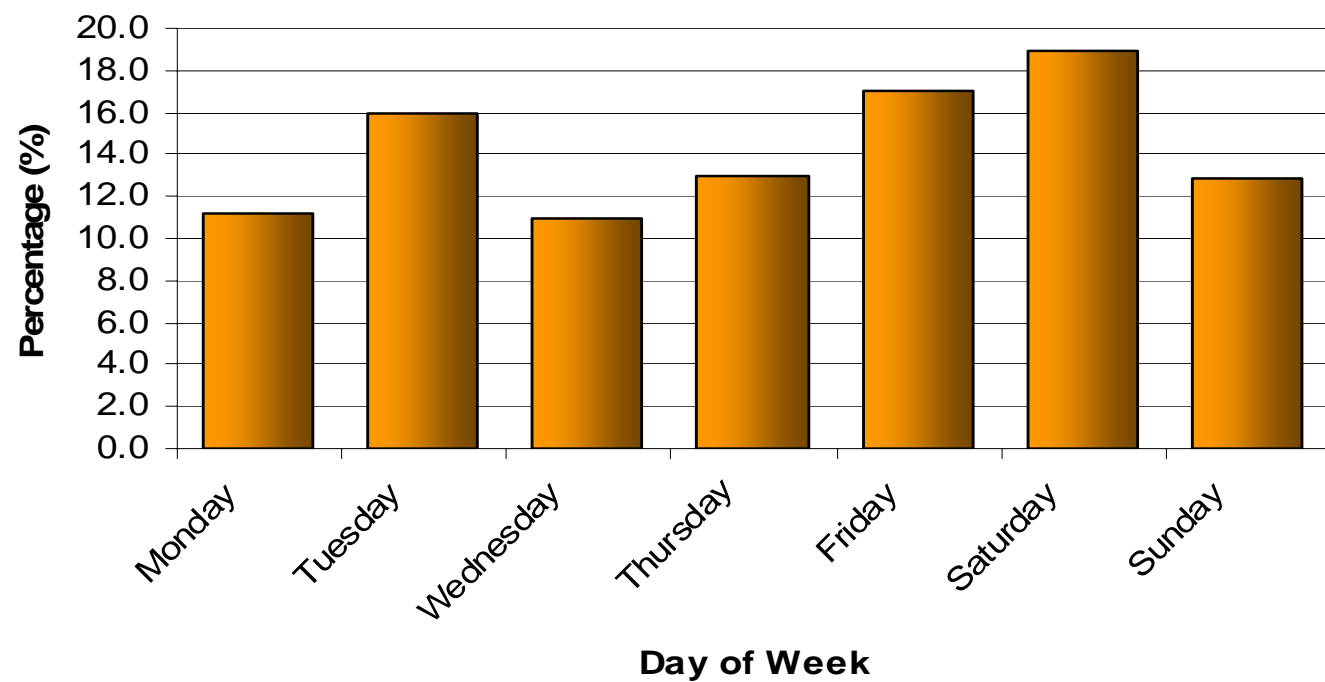
**Figure 9: Distribution of Car Fatalities by Road Environment**



**Figure 10: Distribution of Fatalities by Month**



**Figure 11: Distribution of Fatalities by Day of Week**



**Figure 12: Distribution of Fatalities by Hour of Day**

